

9-1-2010

Bellarmino Museum Brochure - A New Museum

Bellarmino Museum of Art

Follow this and additional works at: <http://digitalcommons.fairfield.edu/diocese-ephemera>

Recommended Citation

Bellarmino Museum of Art, "Bellarmino Museum Brochure - A New Museum" (2010). *General Ephemera*. Book 3.
<http://digitalcommons.fairfield.edu/diocese-ephemera/3>

This Ephemera is brought to you for free and open access by the 2010 Exhibitions & Events at DigitalCommons@Fairfield. It has been accepted for inclusion in General Ephemera by an authorized administrator of DigitalCommons@Fairfield. For more information, please contact digitalcommons@fairfield.edu.



THE BELLARMINE MUSEUM OF ART

A new museum at Fairfield University

Inaugurated on October 25, 2010, the Bellarmine Museum of Art (BMA) at Fairfield University is the fruit of many years' labor. The museum's mission statement makes its objectives clear:

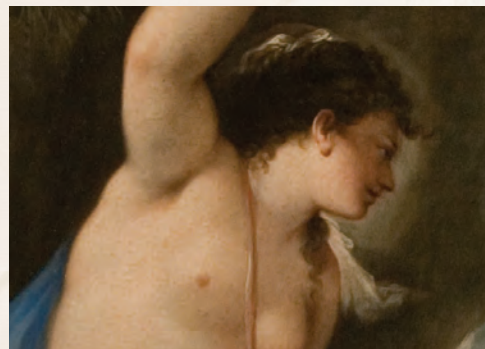
The Bellarmine Museum is dedicated to preserving, studying, and exhibiting those objects entrusted to its care, while never losing sight of its obligation to educate and inspire its many audiences for the greater enrichment of all.



History

Housed in the University's signature building, Bellarmine Hall, the BMA occupies the lower level of the former residence of the Walter B. Lashar family. Designed in 1921 in the English manor style, this handsome structure was purchased by the Jesuits from the town of Fairfield in 1942 to serve as a foundational building for Fairfield University. A lead donation of \$2.5 million from John Meditz '70 laid the groundwork for transforming the Hall's utilitarian lower level into an elegant, state-of-the-art museum. Further support was provided by the National Endowment for the Humanities, the Dolan Family Foundation, the Samuel H. Kress Foundation, and the Jost Foundation, along with the donations of numerous private individuals. The BMA has emerged as a space that is as inspired as it is inspiring, an organization that supports Fairfield's commitment to excellence in education, the arts, and the still-vibrant Ignatian tradition.

THE BELLARMINI MUSEUM OF ART



Collections

The Bellarmine Museum of Art holds a rich and varied collection of paintings, sculpture and decorative art objects, including ten paintings by masters from the Italian Renaissance and Baroque periods – works gifted to the University by the Samuel H. Kress Foundation via Bridgeport's Discovery Museum. The BMA also maintains a large selection of historic plaster casts after important works from ancient Greece and Rome, including eight donated by the Acropolis Museum in Athens. The museum showcases a range of non-Western art objects (including pre-Columbian vessels, 19th-century South East Asian sculptures, and African masks), and is fortunate enough to hold twenty objects on loan from the Metropolitan Museum of Art/The Cloisters Museum representing the Celtic, late Antique, Medieval and Romanesque periods.

Temporary Exhibitions

The BMA hosts approximately three temporary exhibitions each year. These shows are intended to enhance the permanent collection by examining artifacts through an array of perspectives. Please visit www.fairfield.edu/museum for details.

Education

Students, educators, and the public are welcome. Families are invited on select weekends for special enrichment activities (see www.fairfield.edu/museum). Groups of eight or more are kindly requested to make a reservation at (203) 254-4000, ext. 4046.

Visits and Hours

The BMA is open to the public, and is free of charge. Hours are Monday-Friday, 10 a.m. - 3 p.m, September to May, while the University is in session. We are closed for all University holidays, as listed at: www.fairfield.edu/calendar. Wheelchairs, service dogs, and other aids for visitors with special needs are permitted in the galleries. For directions and parking information, please visit www.fairfield.edu/directions.

Get involved

The BMA is always expanding its opportunities for volunteers and supporters. For more information, please contact Dr. Jill Deupi, museum director, at museum@fairfield.edu

Contact us

Bellarmino Museum of Art • Fairfield University
1073 North Benson Road, Fairfield, CT 06824
(203) 254-4000, ext. 4046
www.fairfield.edu/museum



Docere. Delectare. Movere.

To teach. To delight. To move.



Arts & **Minds**