
Everett Raymond Kinstler - Ephemera

Everett Raymond Kinstler: Pulp to Portraits

6-2012

Everett Raymond Kinstler: Pulps to Portraits Poster

Bellarmino Museum of Art

Follow this and additional works at: https://digitalcommons.fairfield.edu/kinstler_ephemera

Recommended Citation

Bellarmino Museum of Art, "Everett Raymond Kinstler: Pulps to Portraits Poster" (2012). *Everett Raymond Kinstler - Ephemera*. 5.

https://digitalcommons.fairfield.edu/kinstler_ephemera/5

This item has been accepted for inclusion in DigitalCommons@Fairfield by an authorized administrator of DigitalCommons@Fairfield. It is brought to you by DigitalCommons@Fairfield with permission from the rights-holder(s) and is protected by copyright and/or related rights. **You are free to use this item in any way that is permitted by the copyright and related rights legislation that applies to your use. For other uses, you need to obtain permission from the rights-holder(s) directly, unless additional rights are indicated by a Creative Commons license in the record and/or on the work itself.** For more information, please contact digitalcommons@fairfield.edu.

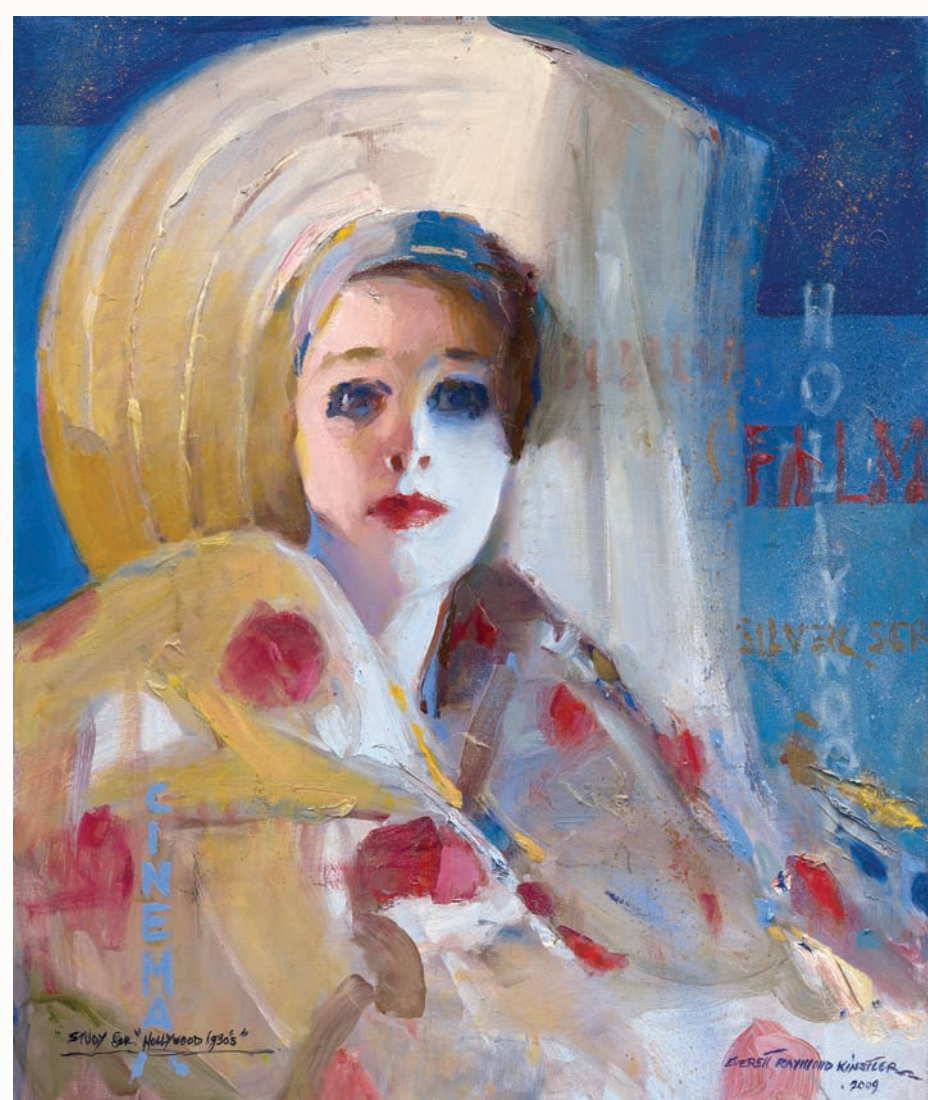
EVERETT RAYMOND KINSTLER

Pulps to Portraits

June 14 – September 28, 2012



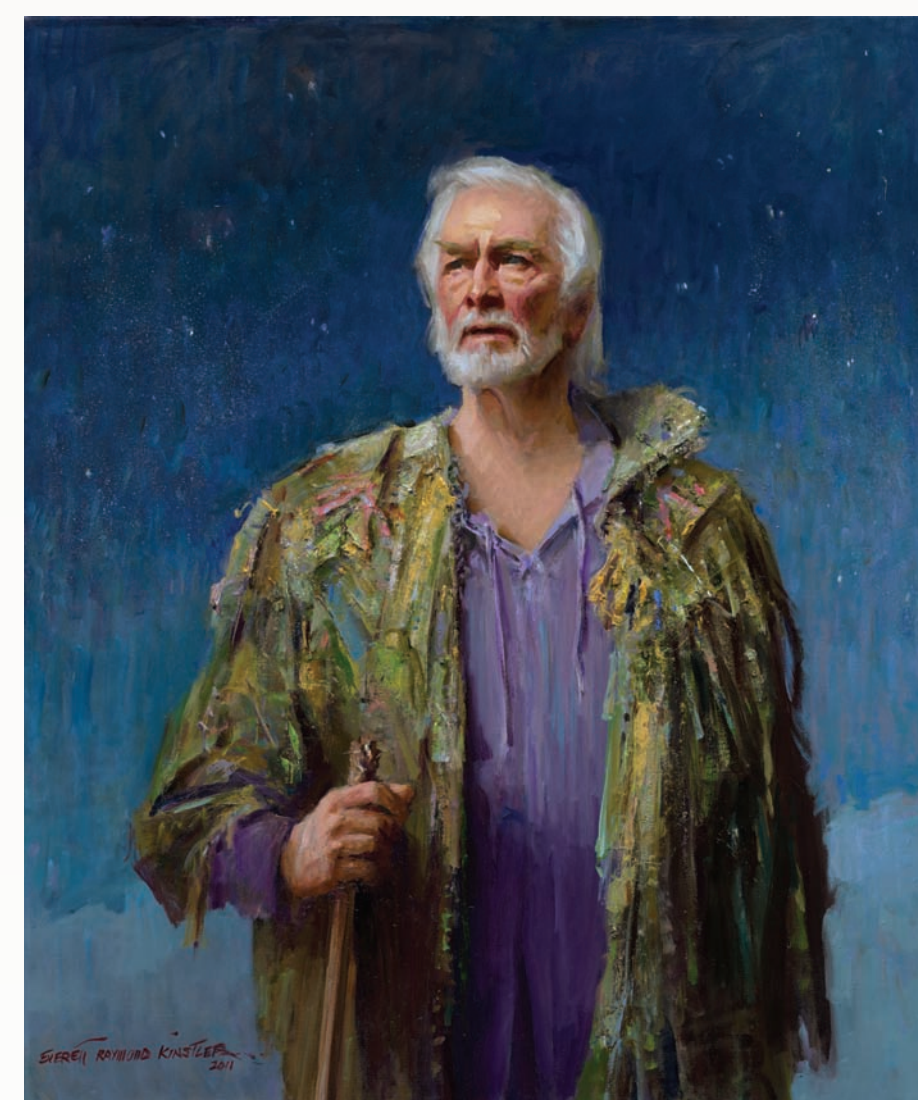
Morning, Portugal, 1990



Movies #1 Glamour, 2010



Sea Witch, 1950



Portrait of Christopher Plummer as Prospero, 2011



Fairfield University

THE BELLARMINE MUSEUM OF ART

1073 North Benson Rd. Fairfield, CT 06824

www.fairfield.edu/museum

Free and open to the public

Hours: Mon.-Fri., 10 a.m. - 4 p.m.

when the University is in session.

fairfield.edu/painter



THE ORIGINAL
fairfield
MAGAZINE



NATIONAL ENDOWMENT FOR THE
Humanities