

9-2015

## Hair in the Classical World Kores Wall Panel

Bellarmino Museum of Art

Follow this and additional works at: <https://digitalcommons.fairfield.edu/hair-ephemera>

---

### Recommended Citation

Bellarmino Museum of Art, "Hair in the Classical World Kores Wall Panel" (2015). *Hair in the Classical World - Ephemera*. 8.

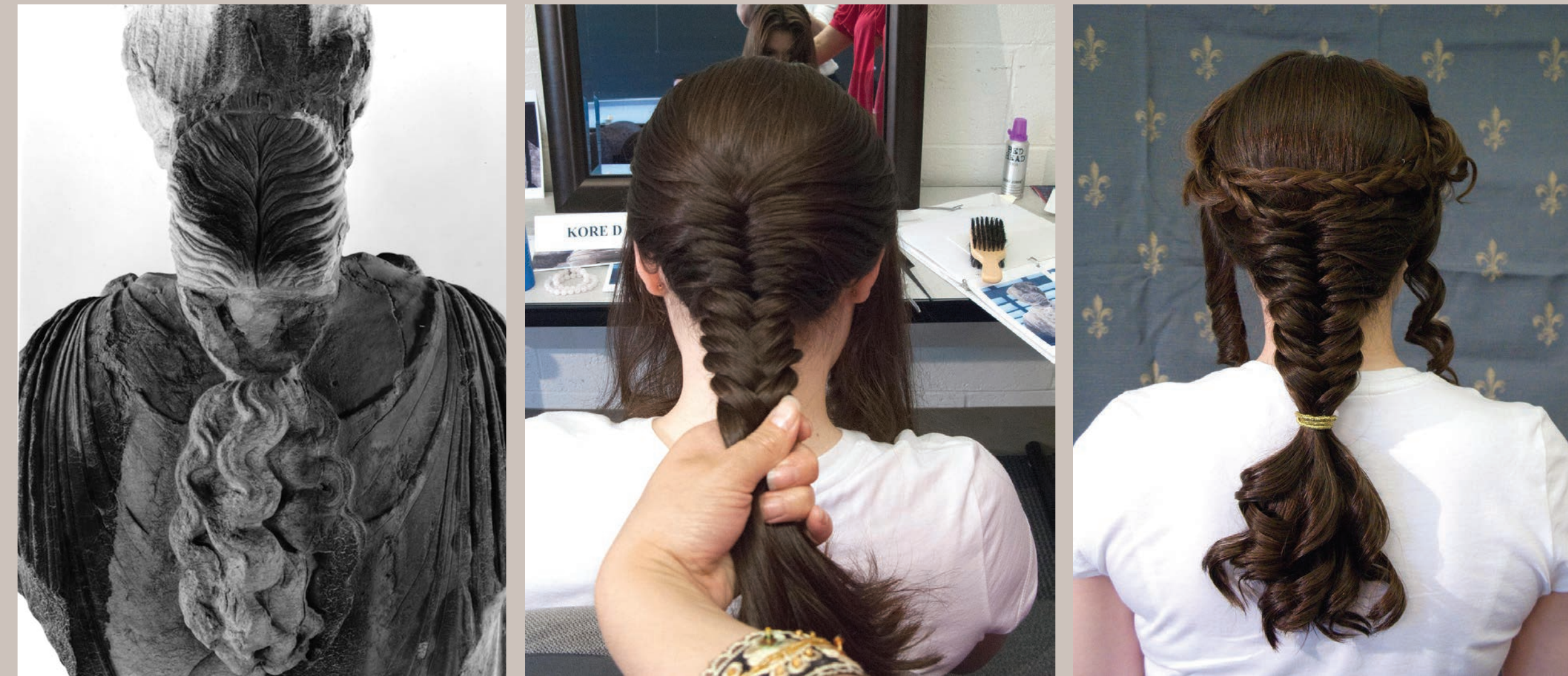
<https://digitalcommons.fairfield.edu/hair-ephemera/8>

This item has been accepted for inclusion in DigitalCommons@Fairfield by an authorized administrator of DigitalCommons@Fairfield. It is brought to you by DigitalCommons@Fairfield with permission from the rights-holder(s) and is protected by copyright and/or related rights. **You are free to use this item in any way that is permitted by the copyright and related rights legislation that applies to your use. For other uses, you need to obtain permission from the rights-holder(s) directly, unless additional rights are indicated by a Creative Commons license in the record and/or on the work itself.** For more information, please contact [digitalcommons@fairfield.edu](mailto:digitalcommons@fairfield.edu).





E



D



C



B



F



A