

---

Andrew Forge: The Limits of Sight - Ephemera

Andrew Forge: The Limits of Sight

---

Fall 2020

## Andrew Forge: The Limits of Sight Rack Card

Fairfield University Art Museum

Follow this and additional works at: <https://digitalcommons.fairfield.edu/andrewforge-ephmera>

---

### Recommended Citation

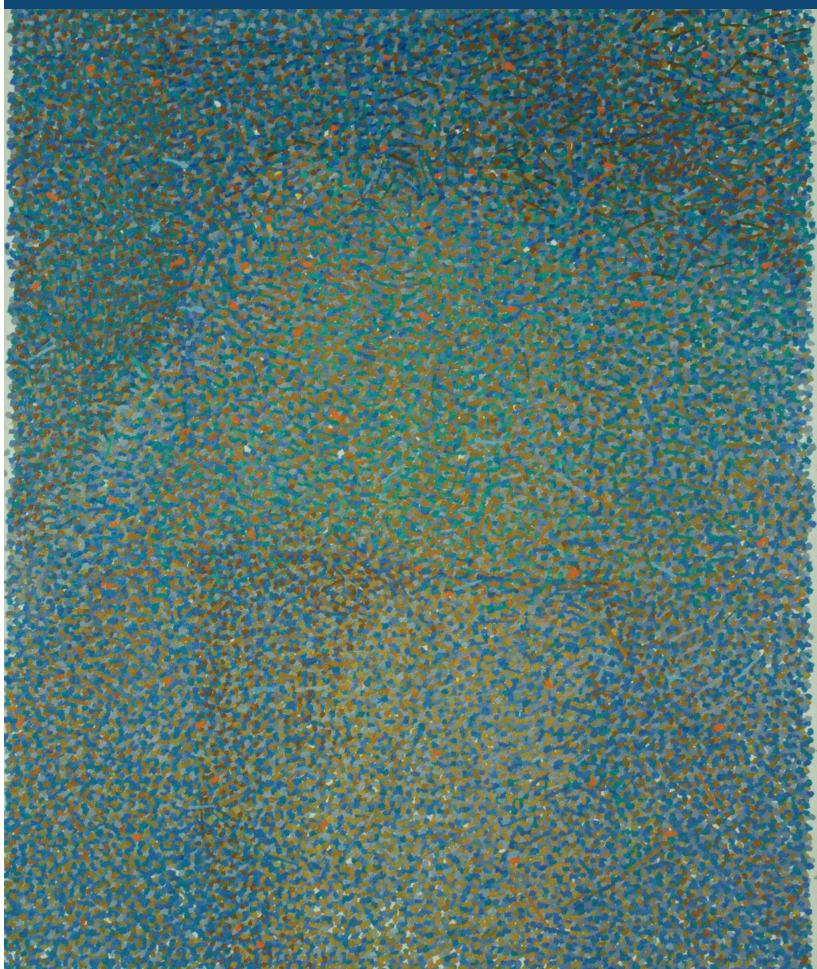
Fairfield University Art Museum, "Andrew Forge: The Limits of Sight Rack Card" (2020). *Andrew Forge: The Limits of Sight - Ephemera*. 11.

<https://digitalcommons.fairfield.edu/andrewforge-ephmera/11>

This item has been accepted for inclusion in DigitalCommons@Fairfield by an authorized administrator of DigitalCommons@Fairfield. It is brought to you by DigitalCommons@Fairfield with permission from the rights-holder(s) and is protected by copyright and/or related rights. **You are free to use this item in any way that is permitted by the copyright and related rights legislation that applies to your use. For other uses, you need to obtain permission from the rights-holder(s) directly, unless additional rights are indicated by a Creative Commons license in the record and/or on the work itself.** For more information, please contact [digitalcommons@fairfield.edu](mailto:digitalcommons@fairfield.edu).

# Andrew Forge

## The Limits of Sight



September 25 - December 19, 2020



FAIRFIELD  
UNIVERSITY

MUSEUM

BELLARMINE HALL GALLERIES

# Andrew Forge

## The Limits of Sight

Organized by scholar and guest curator Karen Wilkin, this exhibition will feature some 20 paintings and works on paper by British artist Andrew Forge (1923-2002). Forge was a painter and art critic, as well as the dean and professor of the Yale University School of Art from 1975-1994. His highly personal abstractions distill his perceptions of place, season, and time of day into subtle orchestrations of pure color. Through this rich presentation, museum visitors – students and faculty as well as the many members of the general public who attend our exhibitions and programs each year – will be introduced to the work of this important contemporary artist.

Lenders to the exhibition include numerous private collections, the artist's widow Ruth Miller, and the collections of the Yale University Art Gallery and the Yale Center for British Art.

[fairfield.edu/museum](http://fairfield.edu/museum)



NATIONAL  
ENDOWMENT  
FOR THE  
HUMANITIES



Connecticut  
Art Trail

Front: Andrew Forge, *Cloak*, 1985, oil on canvas. Collection of Patrick J. Waide Jr. '59