

1950-06-12

Executive branch

Gerard M. Landrey S.J.

Follow this and additional works at: <https://digitalcommons.fairfield.edu/firstdaycover>

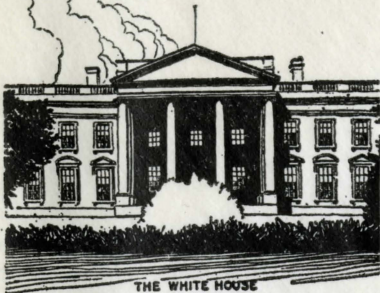
Repository Citation

Landrey, Gerard M. S.J., "Executive branch" (1950). *Rev. Gerard M. Landrey, S.J. First Day Cover Collection*.
1.

<https://digitalcommons.fairfield.edu/firstdaycover/1>

This item has been accepted for inclusion in DigitalCommons@Fairfield by an authorized administrator of DigitalCommons@Fairfield. It is brought to you by DigitalCommons@Fairfield with permission from the rights-holder(s) and is protected by copyright and/or related rights. **You are free to use this item in any way that is permitted by the copyright and related rights legislation that applies to your use. For other uses, you need to obtain permission from the rights-holder(s) directly, unless additional rights are indicated by a Creative Commons license in the record and/or on the work itself.** For more information, please contact digitalcommons@fairfield.edu.

National Capital Sesqui-Centennial

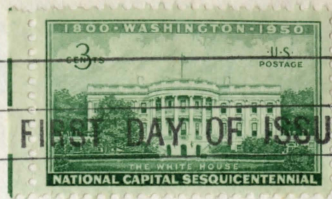
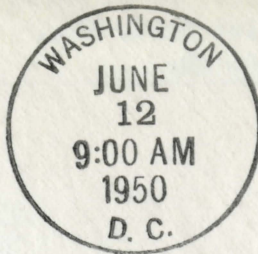


THE WHITE HOUSE

EXECUTIVE

THE EXECUTIVE COMMEMORATIVE STAMP HONORS THAT BRANCH OF THE NATIONAL GOVERNMENT RESPONSIBLE FOR THE ENFORCEMENT OF THE LAWS UNDER THE PRESIDENT. THE EXECUTIVE BRANCH ALSO FORMULATES AND CARRIES OUT NATIONAL POLICIES, DIRECTS THE PUBLIC LIFE OF THE NATION AND DEALS WITH FOREIGN GOVERNMENTS.

LETTERMAN ANDERSON



Rev. Gerard M. Landrey, S. J.,
Fairfield Preparatory School,
Fairfield, Connecticut.

Mr. and Mrs. J. A. King,
31st Road, So.,
Va.